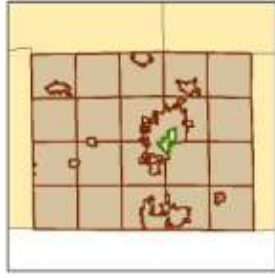


Supervisory District 29

Rock County, Wisconsin



Data Sources: Rock County Planning and Development, Rock County Clerk, US Census Bureau
 This map is not intended to be a substitute for an actual field survey and is an advisory reference only.



Adopted: 9/8/2011

-  Polling Places
-  Supervisory District
-  Supervisory District Boundaries
-  Town Boundaries

Rock County Geographic Information Systems (GIS)
 Planning, Economic and Community
 Development Agency
 51 S Main St, Janesville, WI 53543
 (TR) 608-757-5587, (FAX) 608-757-5586
 email: Planning@co.rock.wi.us

